

# Pop Quiz...

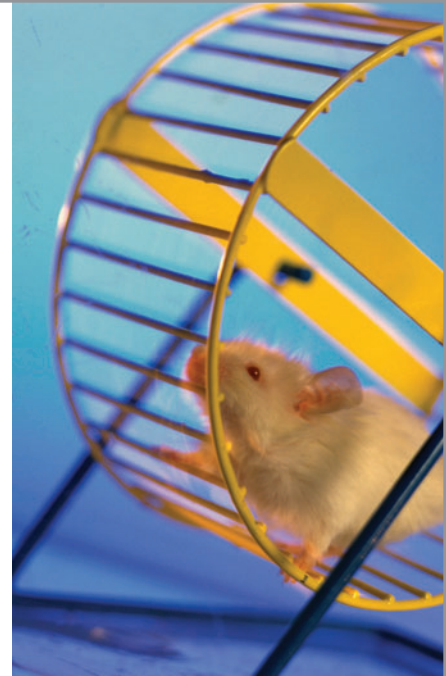
## How to Get You and Your Company Off the Treadmill!

*Can you name a Training Consultancy that is really unique?*

- ✓ With a network of certified professionals in 162 partner companies in 62 countries, delivering in 38 languages?
- ✓ Whose methodologies, customizable workshops and survey tools have been used by half the Fortune 1,000, and 50% of the top Asian 100 companies?
- ✓ Has a wide range of solutions sets that go beyond education and address genuine business challenges faced by companies in today's business climate?
- ✓ Believes in a true "two way street" business relationship with partners by distributing workshops and survey instruments developed by partners from different countries?

Stop running in circles. Discover a fresh, new approach to business and knowledge networking. Expand your know-how and your business!

Visit us at ASTD, Booth #1244



[www.personaglobal.com](http://www.personaglobal.com)